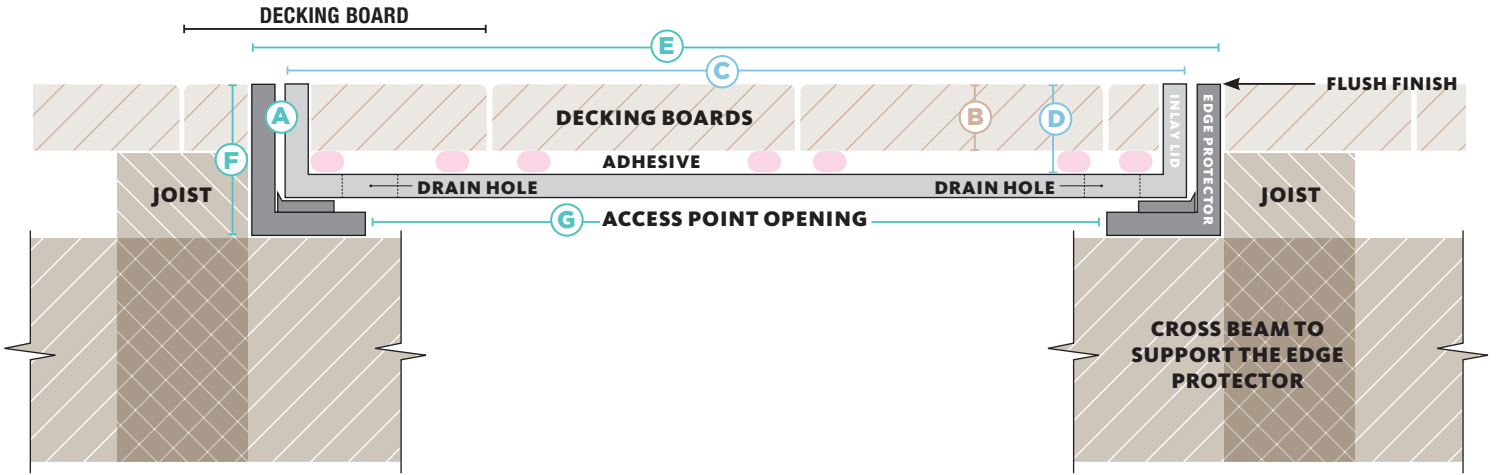




# HIDE KIT SERIES

## ACCESS COVER IN DECKING BOARDS

CROSS SECTION VIEW OF COMPLETED SKIMMER LID INSTALL IN TIMBER DECKING



| HIDE KIT | MATERIAL THICKNESS | INLAY LID          |    | EDGE PROTECTOR FRAME |                |      |
|----------|--------------------|--------------------|----|----------------------|----------------|------|
|          |                    | PRODUCT ORDER CODE | mm | SIZE                 | INTERNAL DEPTH | SIZE |

### 156mm Access Cover Kit

| A         | B     | C       | D  | E       | F  | G       |
|-----------|-------|---------|----|---------|----|---------|
| HAC156-20 | 15-22 | 150 sq. | 23 | 156 sq. | 33 | 120 sq. |
| HAC156-30 | 25-32 |         | 33 |         | 43 |         |

### 206mm Access Cover Kit

|           |       |         |    |         |    |         |
|-----------|-------|---------|----|---------|----|---------|
| HAC206-20 | 15-22 | 196 sq. | 23 | 206 sq. | 33 | 162 sq. |
| HAC206-30 | 25-32 |         | 33 |         | 43 |         |

### 256mm Access Cover Kit

|           |       |         |    |         |    |         |
|-----------|-------|---------|----|---------|----|---------|
| HAC256-20 | 15-22 | 250 sq. | 23 | 256 sq. | 33 | 222 sq. |
| HAC256-30 | 25-32 |         | 33 |         | 43 |         |

### 306mm Skimmer and Access Cover Kit

|           |       |         |    |         |    |         |
|-----------|-------|---------|----|---------|----|---------|
| HSL306-20 | 15-22 | 300 sq. | 23 | 306 sq. | 33 | 252 sq. |
| HSL306-30 | 25-32 |         | 33 |         | 43 |         |

### 342mm Skimmer and Access Cover Kit

|           |       |         |    |         |    |         |
|-----------|-------|---------|----|---------|----|---------|
| HSL342-20 | 15-22 | 336 sq. | 23 | 342 sq. | 33 | 288 sq. |
| HSL342-30 | 25-32 |         | 33 |         | 43 |         |

### 506mm Access Cover Kit

|           |       |         |    |         |    |     |
|-----------|-------|---------|----|---------|----|-----|
| HAC506-20 | 15-22 | 500 sq. | 23 | 506 sq. | 33 | 452 |
|-----------|-------|---------|----|---------|----|-----|

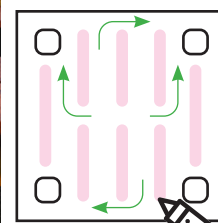
### 656mm Access Cover Kit

|           |       |         |    |         |    |     |
|-----------|-------|---------|----|---------|----|-----|
| HAC656-20 | 15-22 | 650 sq. | 23 | 656 sq. | 33 | 602 |
| HAC656-30 | 25-32 |         | 33 |         | 43 |     |



Allow for the extra depth of the Edge Protector frame

Position between joists with a frame Setup to sit flush with top decking



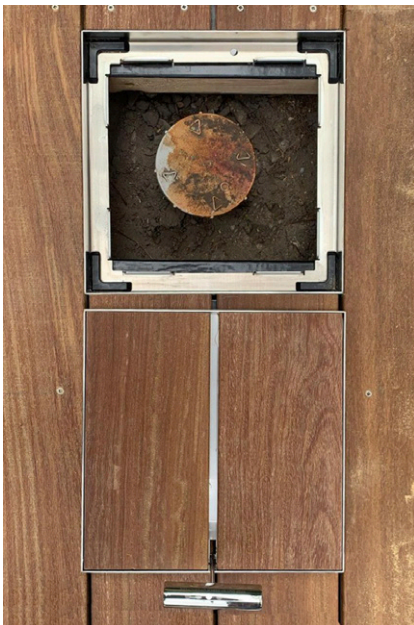
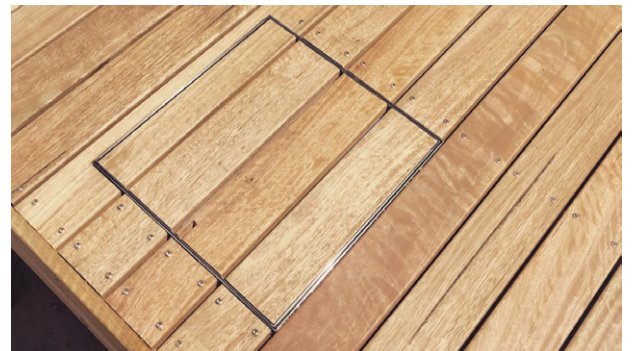
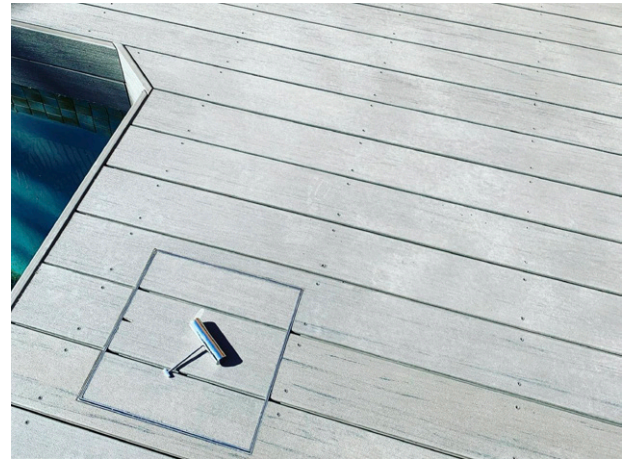
Note:  
Apply adhesive to allow for water drainage.

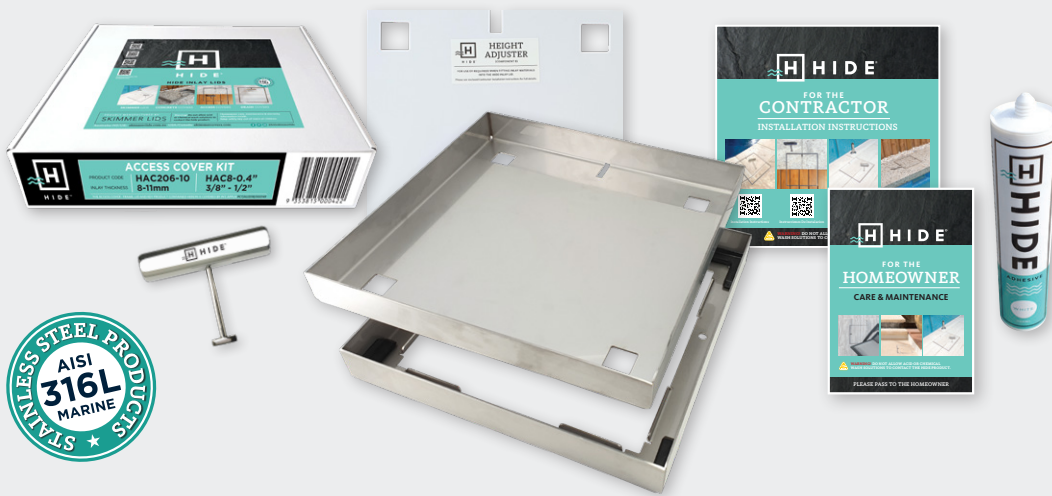
Allow a 2-3mm gap under wood to aid in drainage.



# HIDE ACCESS COVERS

## TIMBER DECKING





### HIDE SKIMMER LID KIT INCLUDES

#### SAFETY KEY

A 316L marine grade stainless steel tool, to enable the installed HIDE cover to be safely and easily opened and closed.

#### HEIGHT ADJUSTER

Used only when additional height is required. Provides 2mm extra height if inlay material is not thick enough to achieve a flush finish with the top of the Inlay Cover.

#### INLAY LID

A 316L marine grade stainless steel tray which holds the inlay (landscape) materials you've chosen, for example, tile, paver, concrete or decking.

#### EDGE PROTECTOR

A 316L marine grade stainless steel frame inserted into a recess within the landscaped area. It protects the coping/surrounds from chipping/breakage when the Inlay Cover is opened/closed.

#### ADHESIVE AND DOCUMENTATION

A one-part adhesive specially developed for a long-term fitting of natural stone and porcelain tiles into the HIDE Inlay Series. Documents consist of comprehensive contractor installation instructions, homeowners warranty and manual.

#### NO ACID OR CHEMICAL WASH

ACID and chemical washes will cause discolouration and/or rusting on the stainless steel HIDE components. Acid or chemical contact will void the HIDE warranty.

Please scan and read the Care & Maintenance document to better understand stainless steel care.



#### CARE & MAINTENANCE



ELEGANT FINISH



HIGH GRADE



EASY INSTALL



10 YEAR WARRANTY



POOL SAFE

