

STAINLESS STEEL / POLYMER KITS

STAINLESS STEEL SKIMMER LID & POLYMER EDGE PROTECTOR

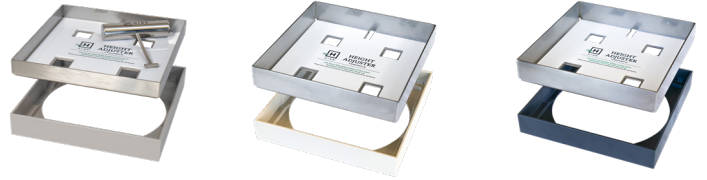
342 SKIMMER LID KIT

INLAY THICKNESS	POLYMER COLOUR	PRODUCT CODE
15-22mm	ASH	HSSP342-20AS
	BONE	HSSP342-20BN
	CHARCOAL	HSSP342-20CH
25-32mm	ASH	HSSP342-30AS
	BONE	HSSP342-30BN
	CHARCOAL	HSSP342-30CH



206 ACCESS COVER KIT

INLAY THICKNESS	POLYMER COLOUR	PRODUCT CODE
15-22mm	ASH	HSSP206-20AS
	BONE	HSSP206-20BN
	CHARCOAL	HSSP206-20CH
25-32mm	ASH	HSSP206-30AS
	BONE	HSSP206-30BN
	CHARCOAL	HSSP206-30CH



BUNDLE

342 SKIMMER & 206 ACCESS

INLAY THICKNESS	POLYMER COLOUR	PRODUCT CODE
15-22mm	ASH	HSSP342/206-20AS
	BONE	HSSP342/206-20BN
	CHARCOAL	HSSP342/206-20CH
25-32mm	ASH	HSSP342/206-30AS
	BONE	HSSP342/206-30BN
	CHARCOAL	HSSP342/206-30CH



BUNDLE AND SAVE

Tip: Bundle your 342 Skimmer Lid with the 206 Access Cover for a consistent finish. The 206 size will cover ground water inspection pipes in style. This package is priced to inspire.

FULL POLYMER KITS

POLYMER SKIMMER LID & POLYMER EDGE PROTECTOR

342 SKIMMER LID KIT

INLAY THICKNESS	POLYMER COLOUR	PRODUCT CODE
15-22mm	ASH	HPSL342-20AS
	BONE	HPSL342-20BN
	CHARCOAL	HPSL342-20CH
25-32mm	ASH	HPSL342-30AS
	BONE	HPSL342-30BN
	CHARCOAL	HPSL342-30CH



206 ACCESS COVER KIT

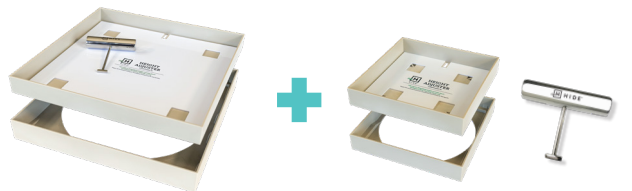
INLAY THICKNESS	POLYMER COLOUR	PRODUCT CODE
15-22mm	ASH	HPAC206-20AS
	BONE	HPAC206-20BN
	CHARCOAL	HPAC206-20CH
25-32mm	ASH	HPAC206-30AS
	BONE	HPAC206-30BN
	CHARCOAL	HPAC206-30CH



BUNDLE

342 SKIMMER & 206 ACCESS

INLAY THICKNESS	POLYMER COLOUR	PRODUCT CODE
15-22mm	ASH	HP342/206-20AS
	BONE	HP342/206-20BN
	CHARCOAL	HP342/206-20CH
25-32mm	ASH	HP342/206-30AS
	BONE	HP342/206-30BN
	CHARCOAL	HP342/206-30CH



BUNDLE AND SAVE

Bundles are available in all three colours and both combinations. Bundled together in one box it's too good to pass up.