



# POLYMER KITS WORLD FIRST

## BOND FREE OPTIONS



HIDE RANGE

### Stainless Steel / Polymer Combination



HIDE 'Combination Kits' utilise the proven strength and robust properties of the HIDE® stainless steel lid combined with a Polymer Edge Protector. The Polymer Edge Protector insulates the stainless steel and therefore does not require earthing, and the polymer colour blends in with surrounding tiles.

- ✓ Discrete key access - Full stone coverage
- ✓ Simple inlay fabrication with no moving parts
- ✓ Inconspicuous locking system
- ✓ HIDE's proven keyway safety access
- ✓ Ash, Bone & Charcoal colour options to match tiles
- ✓ Polymer is available in 20mm & 30mm depths.
- ✓ 20-year warranty stainless /5-year warranty polymer
- ✓ Conforms to Australian Pool Safety Standards
- ✓ Cannot be lifted without the safety key

### Polymer Kits

HIDE 'Polymer Kits' consist of a polymer Lid and Edge Protector. Polymer Edge Protector will suit installations where bonding (earthing) is unachievable.



- ✓ All the benefits listed above
- ✓ Polymer products have a 5-year warranty

Stone on-site  
installation

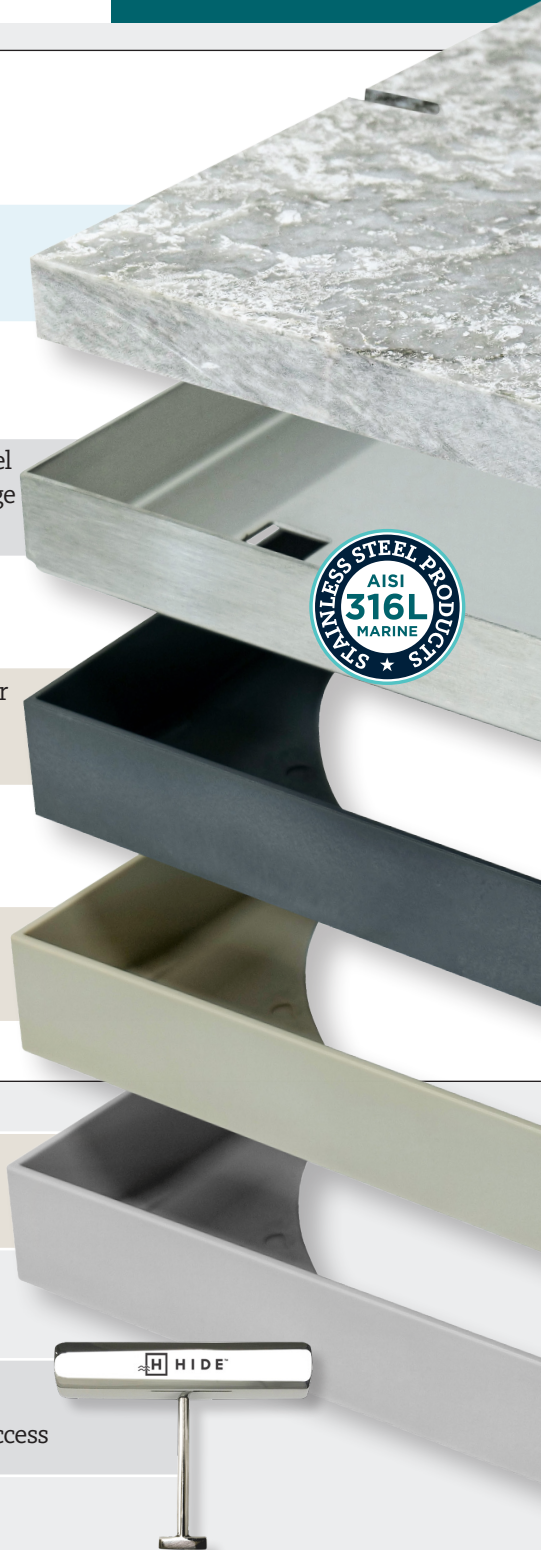
316 Stainless Steel  
Lid / Polymer Edge  
Protector

Charcoal Polymer  
Edge Protector  
20 & 30mm

Bone Polymer  
Edge Protector  
20 & 30mm

Ash Polymer  
Edge Protector  
20 & 30mm

Safety Key  
Child resistant access



**HEAD OFFICE**  
 26 Link Drive, Yatala, Qld, 4207  
 P: +61 7 3807 2551  
 E: admin@skimmerlids.com.au  
 W: www.skimmerlids.com.au

**SALES SUPPORT**  
 AUST/NZ - Gary Steele - M: 0427 270 560  
 NSW - Sarah-Jane Winston - M: 0447 981 121  
 @hideskimmerlids



HIDE® Skimmer Lids conform to Australian Safety Standards

PROUDLY MANUFACTURED BY:  
SKIMMER LIDS

